

Specifications:
Guy support Spacing:

Minimum 5 meters /Maximum 6 meters from mast base, at 120-Degree intervals around 360-Degrees arc.

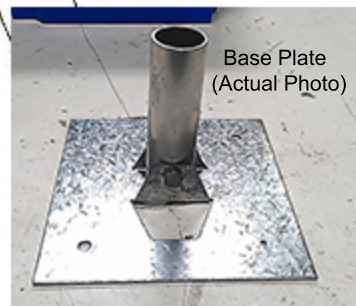
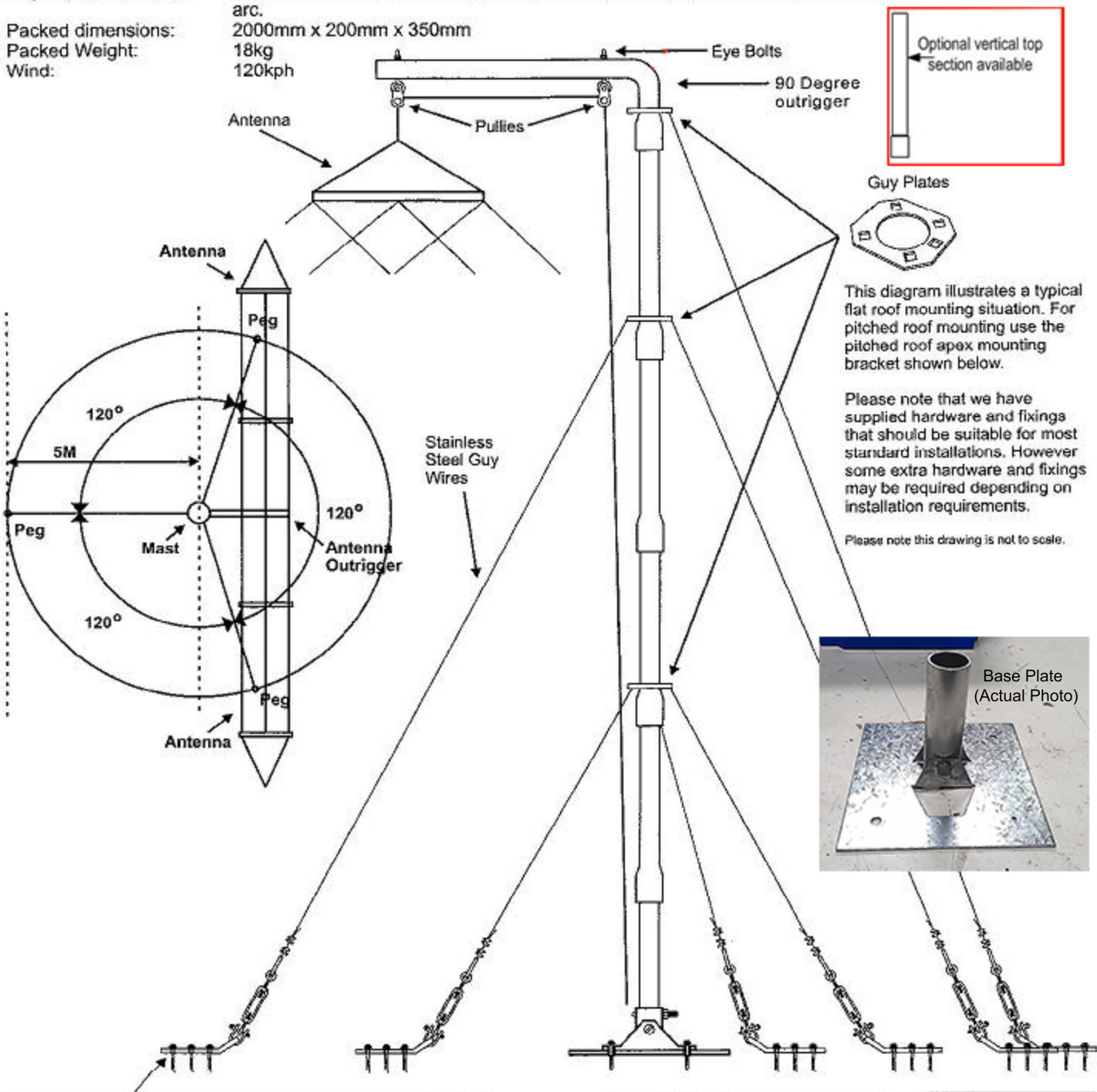
Packed dimensions:

2000mm x 200mm x 350mm

Packed Weight:

18kg
120kph

Wind:



Base Plate
(Actual Photo)

Cleat and tumbuckle detail



For mounting onto a pitched roof use the supplied pitched roof apex bracket and self tapping screws

